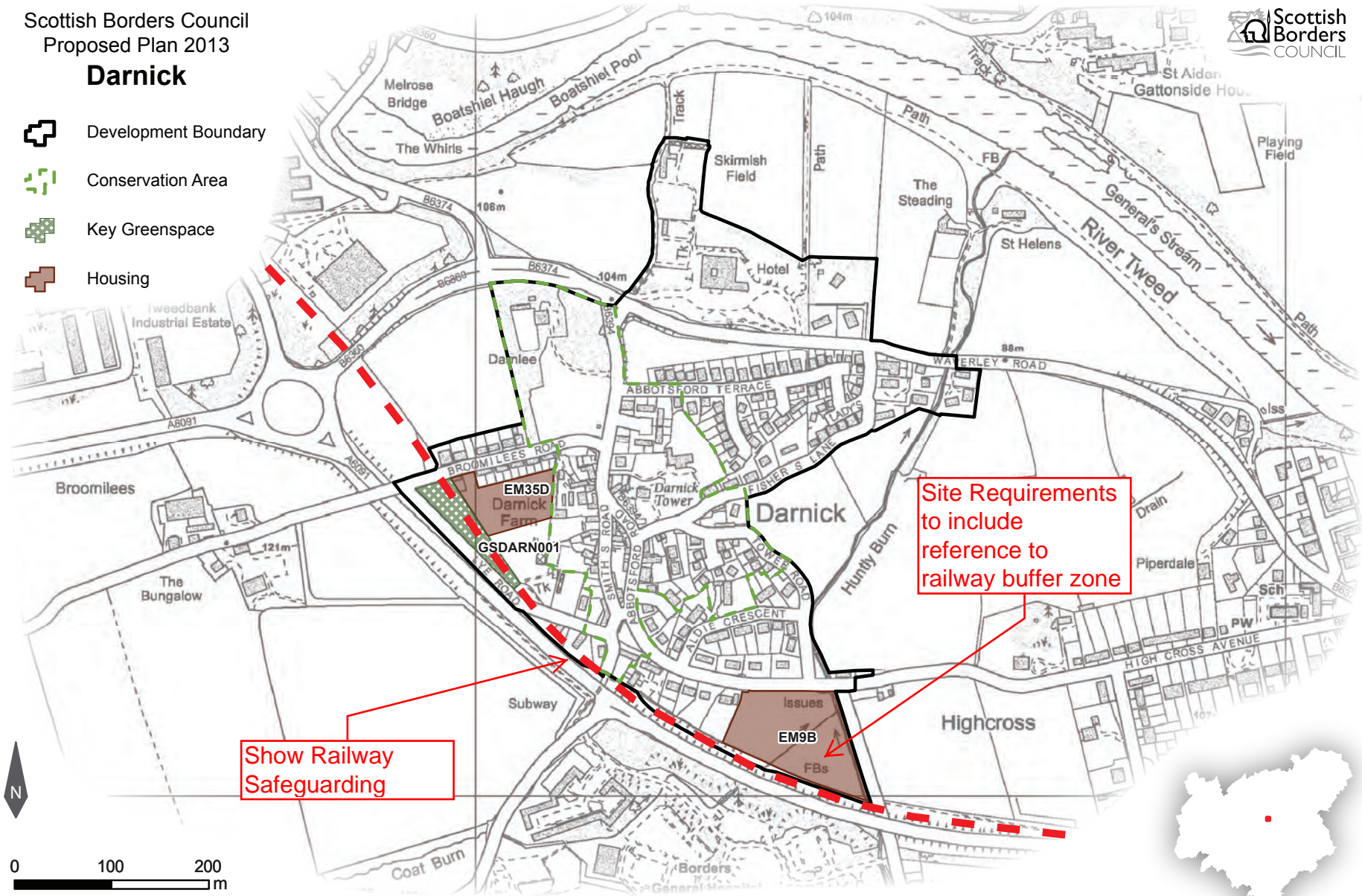


Scottish Borders Council  
Proposed Plan 2013



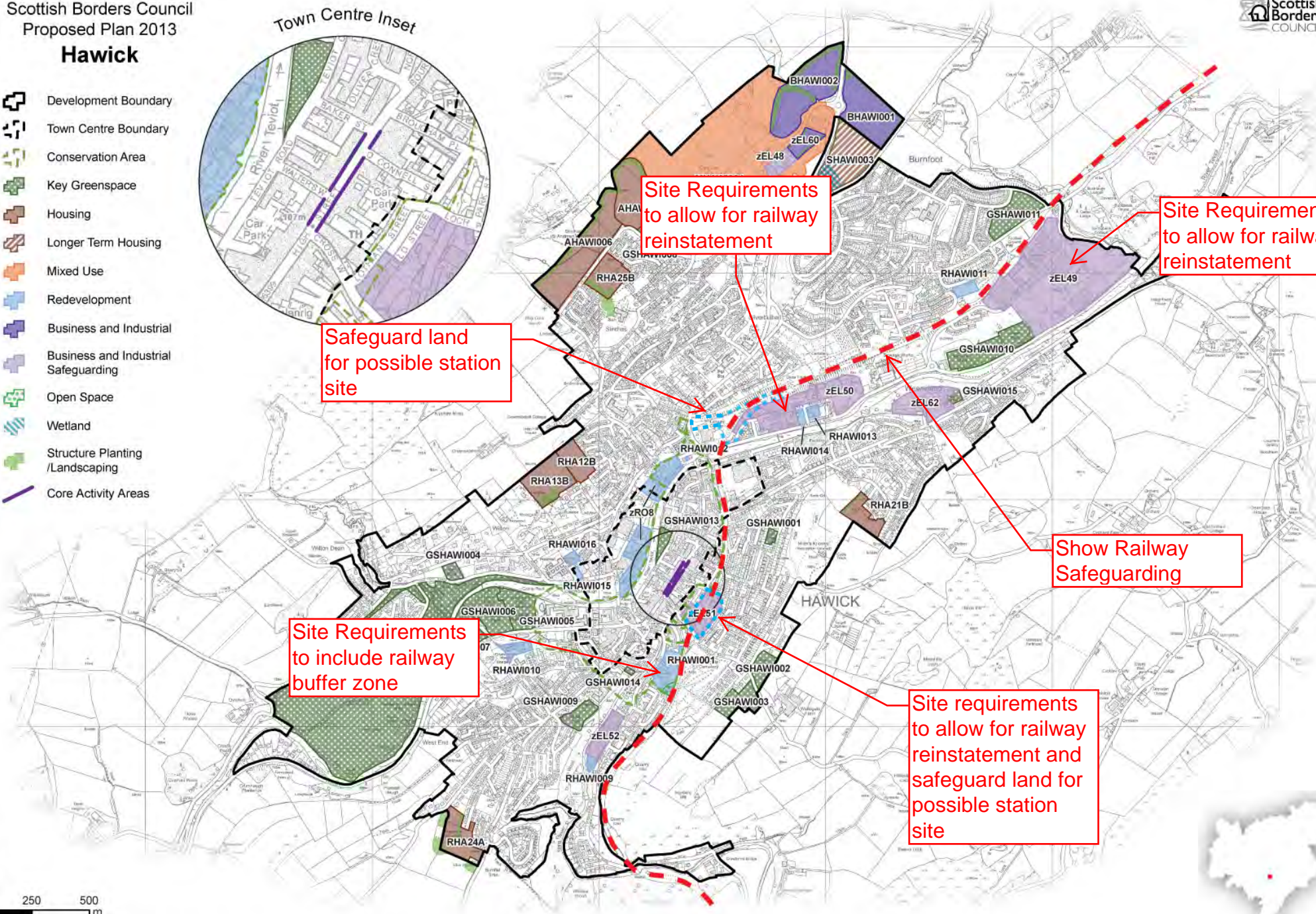
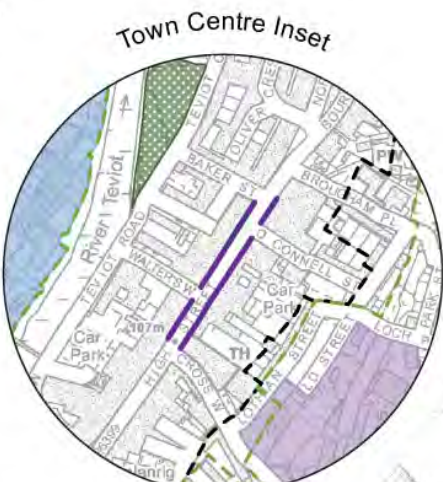
### Darnick

-  Development Boundary
-  Conservation Area
-  Key Greenspace
-  Housing



# Hawick

- Development Boundary
- Town Centre Boundary
- Conservation Area
- Key Greenspace
- Housing
- Longer Term Housing
- Mixed Use
- Redevelopment
- Business and Industrial
- Business and Industrial Safeguarding
- Open Space
- Wetland
- Structure Planting /Landscaping
- Core Activity Areas



Site Requirements to allow for railway reinstatement

Site Requirements to allow for railway reinstatement

Safeguard land for possible station site

Site Requirements to include railway buffer zone

Show Railway Safeguarding

Site requirements to allow for railway reinstatement and safeguard land for possible station site

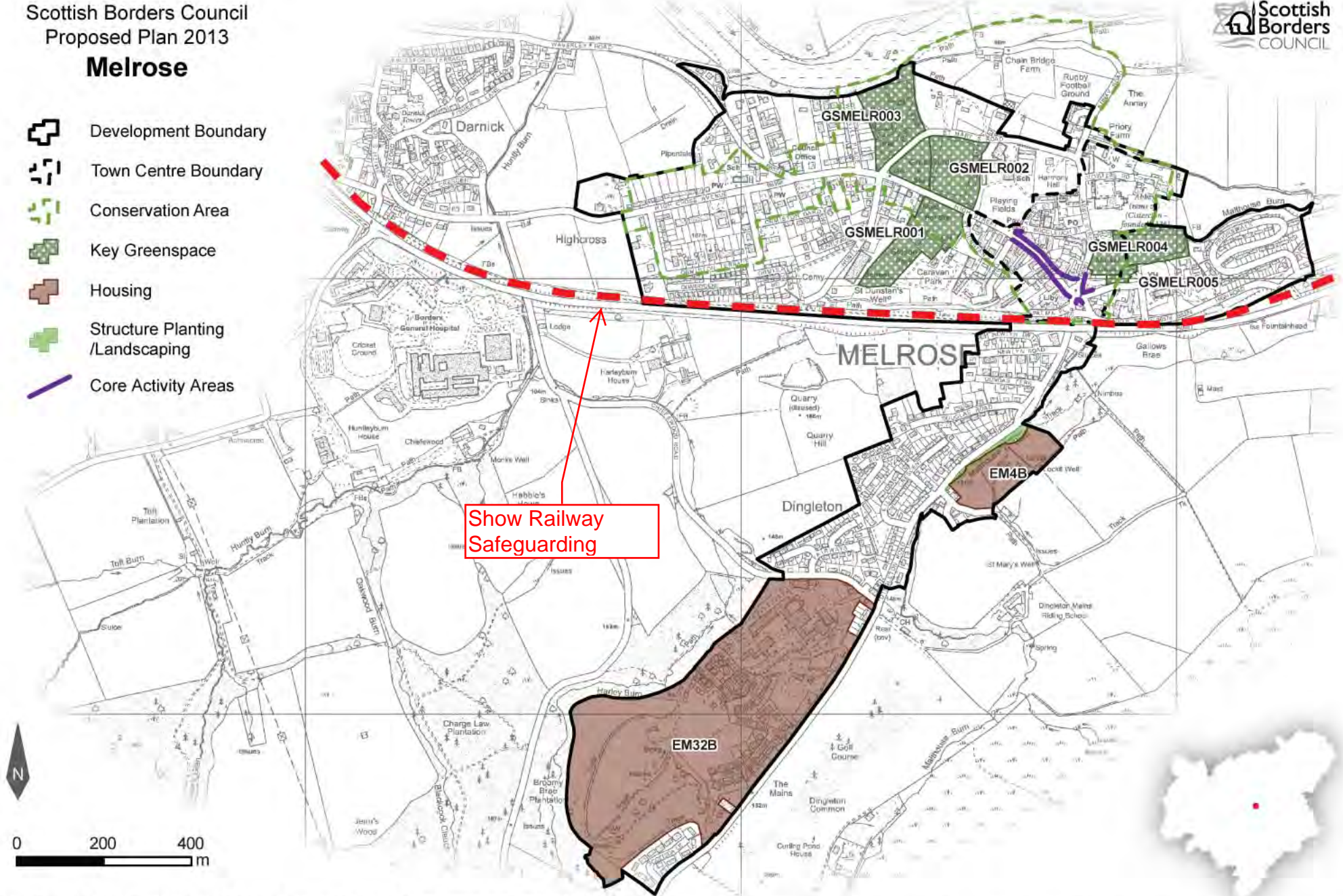


Scottish Borders Council  
Proposed Plan 2013



**Melrose**

-  Development Boundary
-  Town Centre Boundary
-  Conservation Area
-  Key Greenspace
-  Housing
-  Structure Planting/Landscaping
-  Core Activity Areas



# Scottish Borders Council Proposed Plan 2013 Newcastleton



-  Development Boundary
-  Conservation Area
-  Key Greenspace
-  Housing
-  Mixed Use
-  Business and Industrial Safeguarding
-  Structure Planting /Landscaping

Former Langholm Street Level Crossing

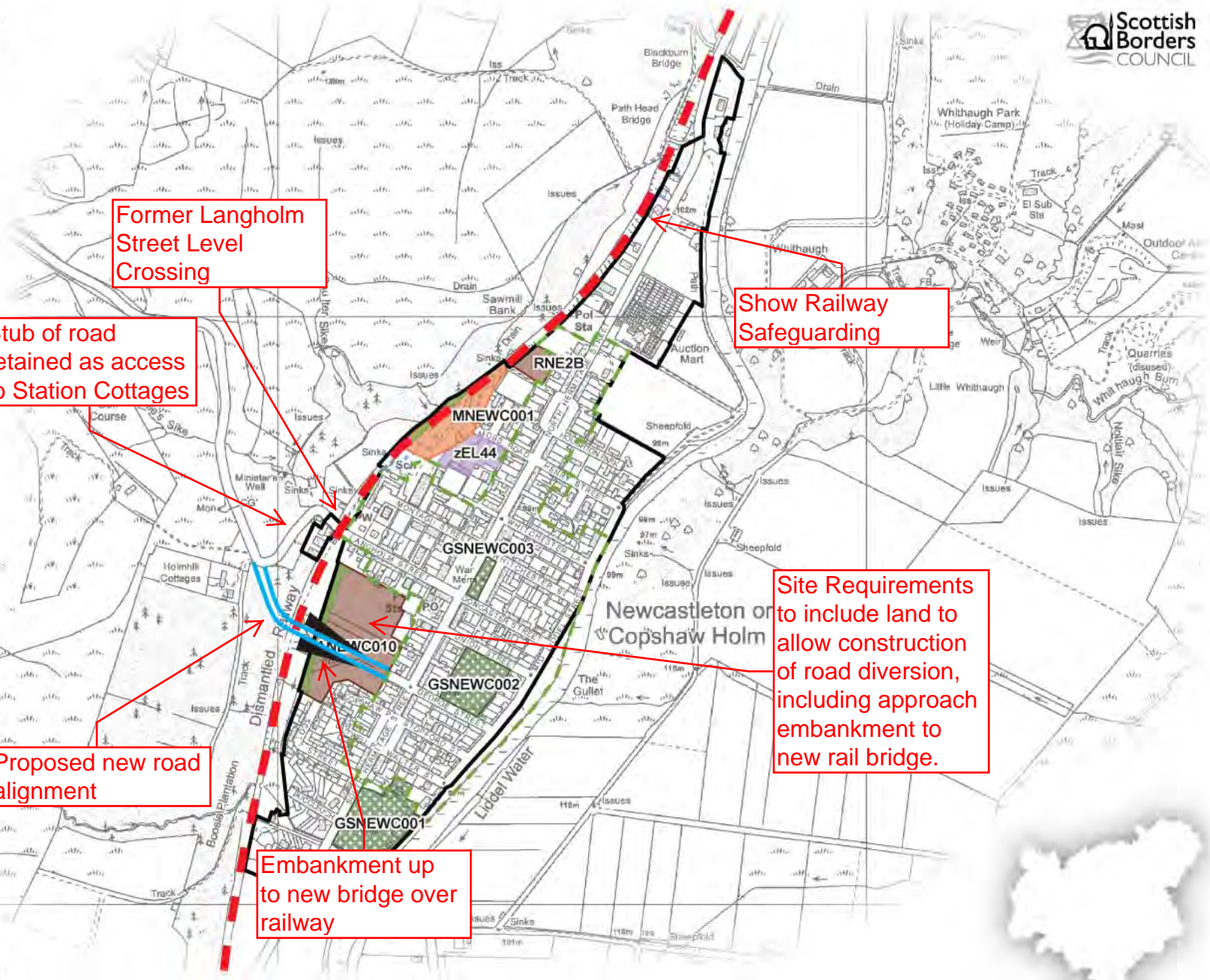
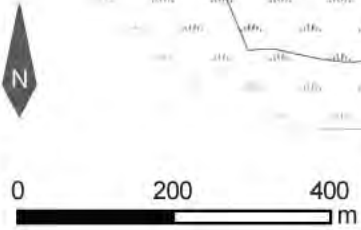
Stub of road retained as access to Station Cottages

Show Railway Safeguarding

Site Requirements to include land to allow construction of road diversion, including approach embankment to new rail bridge.

Proposed new road alignment

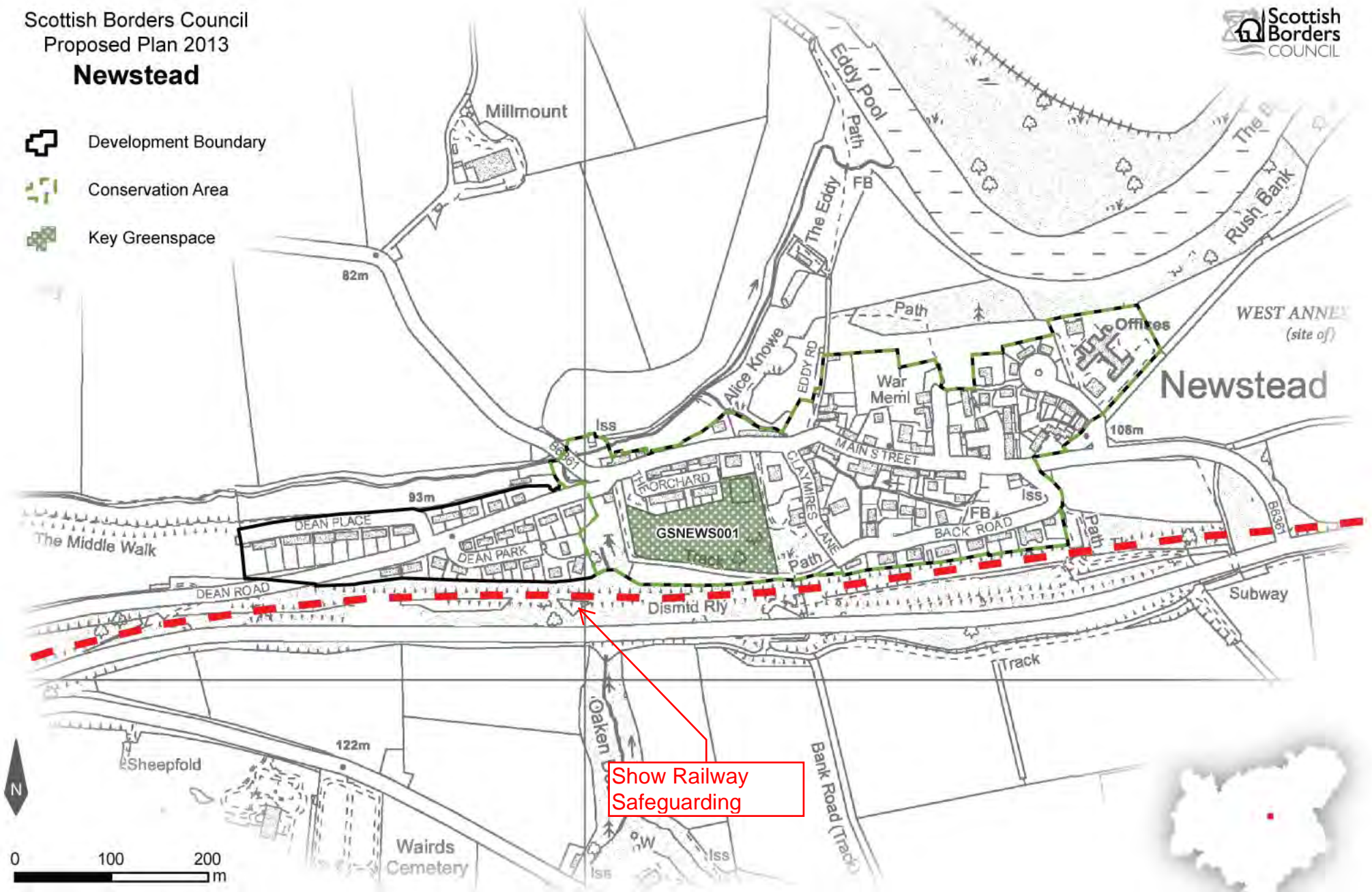
Embankment up to new bridge over railway



Scottish Borders Council  
Proposed Plan 2013  
**Newstead**



- Development Boundary
- Conservation Area
- Key Greenspace



PROPOSED LOCAL DEVELOPMENT PLAN | SCOTTISH BORDERS COUNCIL | 439

# Newtown St Boswells

-  Development Boundary
-  Key Greenspace
-  Housing
-  Mixed Use
-  Redevelopment
-  Business and Industrial
-  Business and Industrial Safeguarding
-  Open Space
-  Structure Planting /Landscaping

Site Requirements to take account of railway reopening

Show Railway Safeguarding

Omit part of MNEWT001 in conflict with railway corridor

Site Requirements to take account of railway reopening

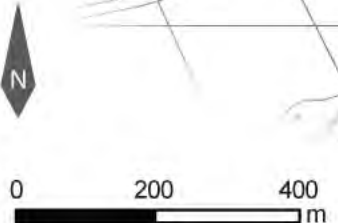
Approved Planning Brief requires updating to take account of railway reinstatement

Business and Industry safeguarding of zEL36 to be deleted.

Safeguard land for future station site

Site Requirements to include protection of railway alignment

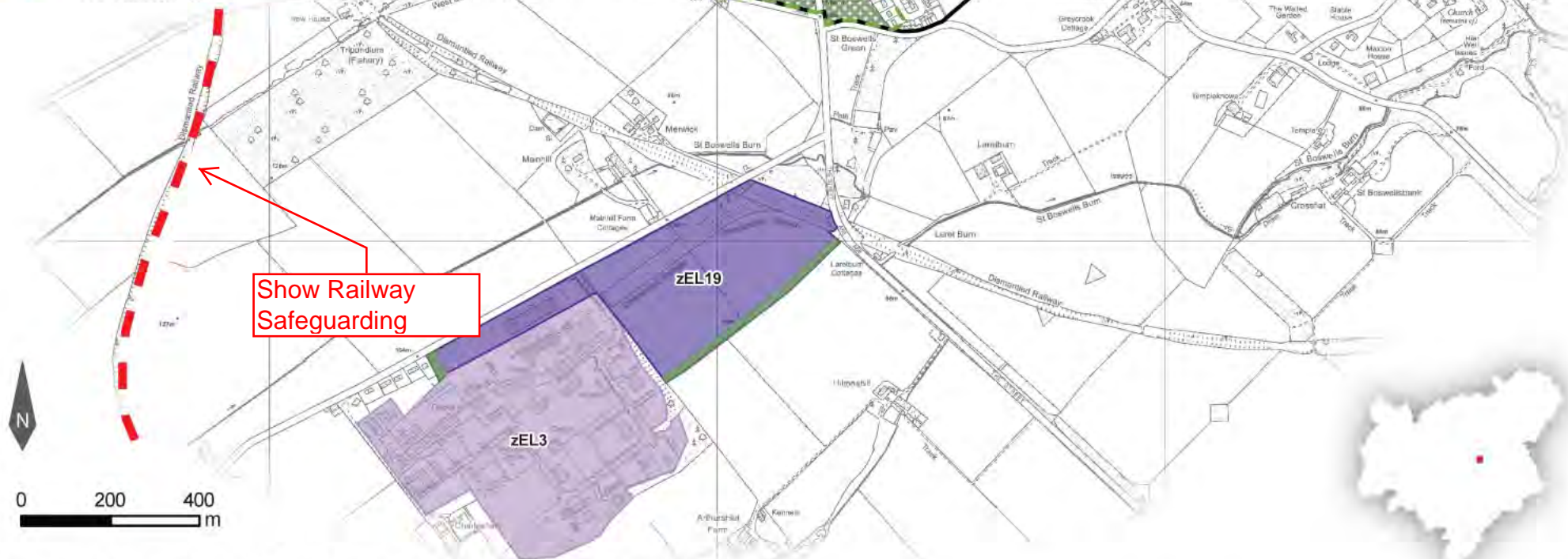
PROPOSED LOCAL DEVELOPMENT PLAN | SCOTTISH BORDERS COUNCIL | 445



Scottish Borders Council  
 Proposed Plan 2013  
**St Boswells**



-  Development Boundary
-  Conservation Area
-  Key Greenspace
-  Business and Industrial
-  Business and Industrial Safeguarding
-  Structure Planting /Landscaping



Show Railway Safeguarding

Scottish Borders Council  
Proposed Plan 2013

**Tweedbank**



-  Development Boundary
-  Key Greenspace
-  Mixed Use
-  Business and Industrial Safeguarding
-  Railway Station
-  Railway Safeguarding
-  Structure Planting /Landscaping



Site Requirements to be amended to refer to railway reinstatement

Amend site boundary to exclude railway alignment

Show Railway Safeguarding